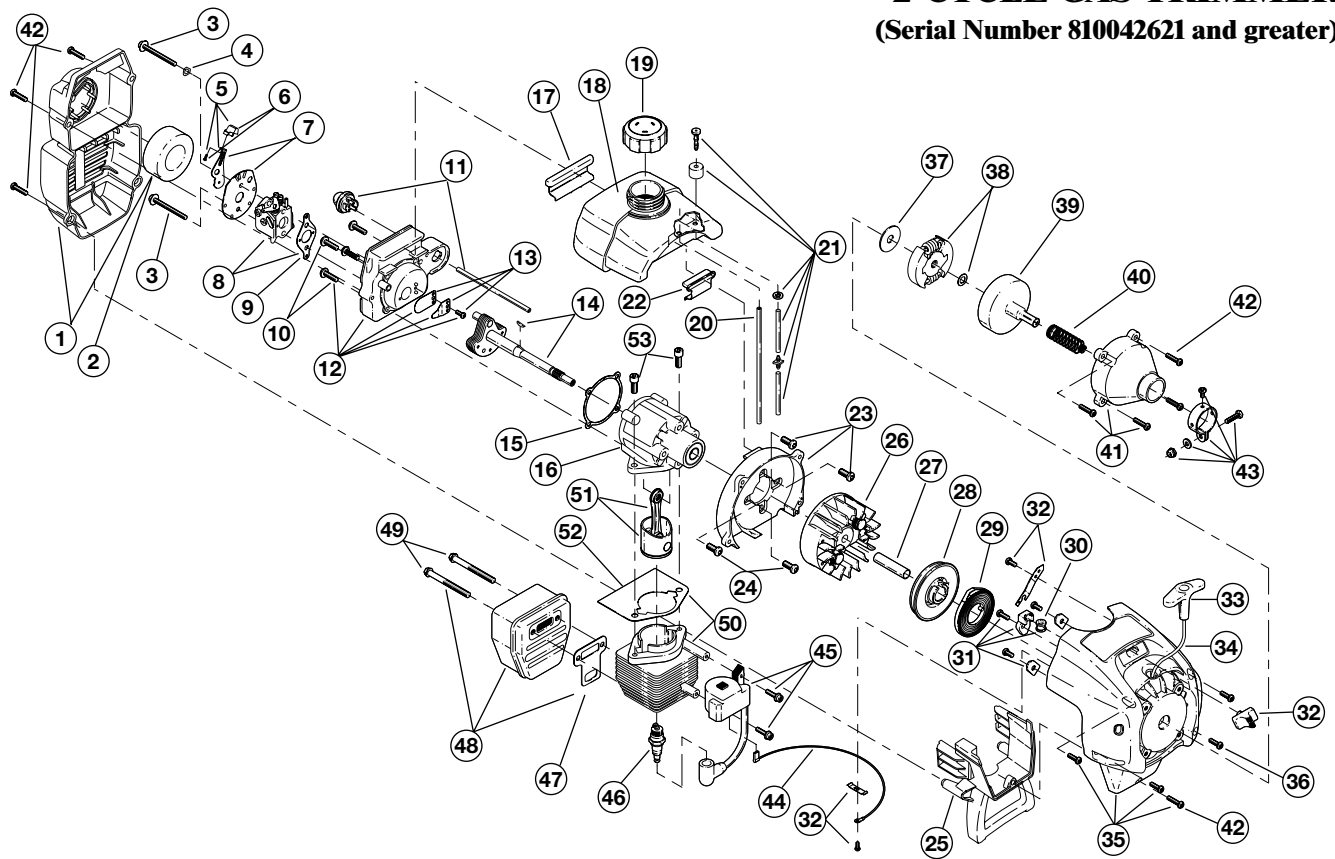


ENGINE PARTS - MODEL 775r

2-CYCLE GAS TRIMMER

(Serial Number 810042621 and greater)



Item	Part No.	Description	Item	Part No.	Description
1	182059	Air Cleaner/Muffler Cover Assembly (includes 2 & 42)	34	613103	Rope
2	180350	Air Cleaner Filter	35	181443	Starter Housing Assembly (includes 28-34, 42 & 44)
3	180351	Carburetor Mounting Screw Assembly	36	181862	Housing Screw
4	180352	Wavey Washer	37	181074	Clutch Washer
5	182061	Choke Lever Assembly (includes 6)	38	181445	Clutch Rotor Assembly
6	182070	Choke Knob and Screw	39	153592	Clutch Drum Assembly
7	182060	Choke Lever and Plate (includes 5)	40	612468	Spring
8	182062	Carburetor Assembly W/Limiter Caps (includes 9 & 21)	41	180098	Clutch Cover Assembly
9	610675	Carburetor Gasket	42	181345	Cover Screw
10	181860	Carb Mount Screw	43	153597	Upper Clamp Assembly
11	181558	Primer and Hose Assembly	44	180036	Wire Lead
12	182063	Carb Mount Assembly (includes 10)	45	181937	Module Assembly
13	684451	Reed Assembly	46	610311	Spark Plug
14	181498	Power Shaft Assembly	47	182065	Exhaust Gasket
15	612115	Carburetor Mount Gasket	48	182066	Muffler Assembly (includes 47 & 49)
16	180026	Crank Case Service Assembly (includes 10, 14 & 24)	49	147575	Muffler Mounting Bolt Assembly
17	612134	Rear Mounting Pad	50	181622	Cylinder Assembly (includes 53)
18	181438	Fuel Tank Assembly (includes 19-21)	51	684449	Piston and Rod Assembly
19	181559	Fuel Cap Assembly	52	610674	Cylinder Gasket
20	181168	Fuel Return Line	53	181870	Cylinder Bolt
21	682039	Fuel Line Assembly	*	180011	Engine Gasket Kit
22	145308	Front Mounting Pad	*	180602	O.E.M. Carburetor Repair Kit (Walbro)
23	153520	Shroud Assembly	*	180090	O.E.M. Carburetor Repair Kit (Zama)
24	181861	Shroud Screw	*	181873	Gasket Diaphragm Repair Kit (Walbro)
25	182064	Shroud Extension and Stand	*	180091	Gasket Diaphragm Repair Kit (Zama)
26	180929	Flywheel Assembly	*	180530	Piston Ring
27	181065	Spacer	*	181623	Short Block Assembly (includes 10, 14, 16, 24, 46, 50-53)
28	181597	Recoil Pulley Assembly	*	610676	Flywheel Key
29	613102	Recoil Spring	*	181501	Starter Housing Screw Set
30	611061	Rope Guide	*	610309	Crankcase Seal
31	181441	Pulley Retainer Assembly	*	181599	Clutch Springs (Qty. 2)
32	181442	Switch Assembly (includes 44)	*		Items Not Shown
33	181079	Pull Handle			

BOOM AND TRIMMER PARTS - MODEL 775r

2-CYCLE GAS TRIMMER

(Serial Number 810042621 and greater)

Item	Part No.	Description
1	182069	Throttle Housing and Trigger Assembly (includes 2 & 3)
2	610314	Throttle Trigger Spring
3	181556	Throttle Trigger
4	182068	Throttle Cable Assembly
5	180339	Upper Drive Shaft Housing Assembly
6	180687	J-Handle Assembly (includes 7 & 8)
7	612831	Grip
8	612021	Tube Closure
9	683295	Handle Bracket Assembly (includes 10-15)
10	181811	Screw
11	181812	Upper Handle Clamp
12	181813	Middle Handle Clamp
13	181814	Lower Handle Clamp
14	181815	Nut
15	145569	Anti-Rotation Screw
16	181616	Click-Link Coupler (includes 17-20)
17	182057	Screw
18	181617	Bolt
19	181618	Adjustment Knob
20	181886	Knob Retaining Nut
21	180340	Lower Drive Shaft Housing Assembly
22	683608	Lower Flexible Drive Shaft
23	153597	Lower Clamp Assembly (includes 24)
24	145569	Anti-Rotation Screw
25	181566	Gearbox Assembly
26	180547	Shield Mounting Hardware
27	180548	Shield and Blade Assembly (includes 28)
28	180553	Blade Assembly
29	181457	Outer Spool and Eyelet Assembly (includes 30)
30	181458	Retainer
31	181561	Thrust Washer
32	181459	Small Spring
33	181461	Slider
34	181532	E-Clip
35	181531	Spring
36	181462	Plunger
37	181463	C-Clip
38	181464	Inner Reel
39	181465	Large Spring
40	181467	Foam Seal
41	181468	Bump Head Knob Assembly with Spring and Foam Seal

Optional Accessories

- * 181472 Replacement Line, 0.80 Diameter (Eight - 10 ft lengths)
- * 181460 Reel and Line Assembly
- * 682075 Shoulder Strap Assembly
- * 147543 Ryobi 2-Cycle Oil
- * Items Not Shown

