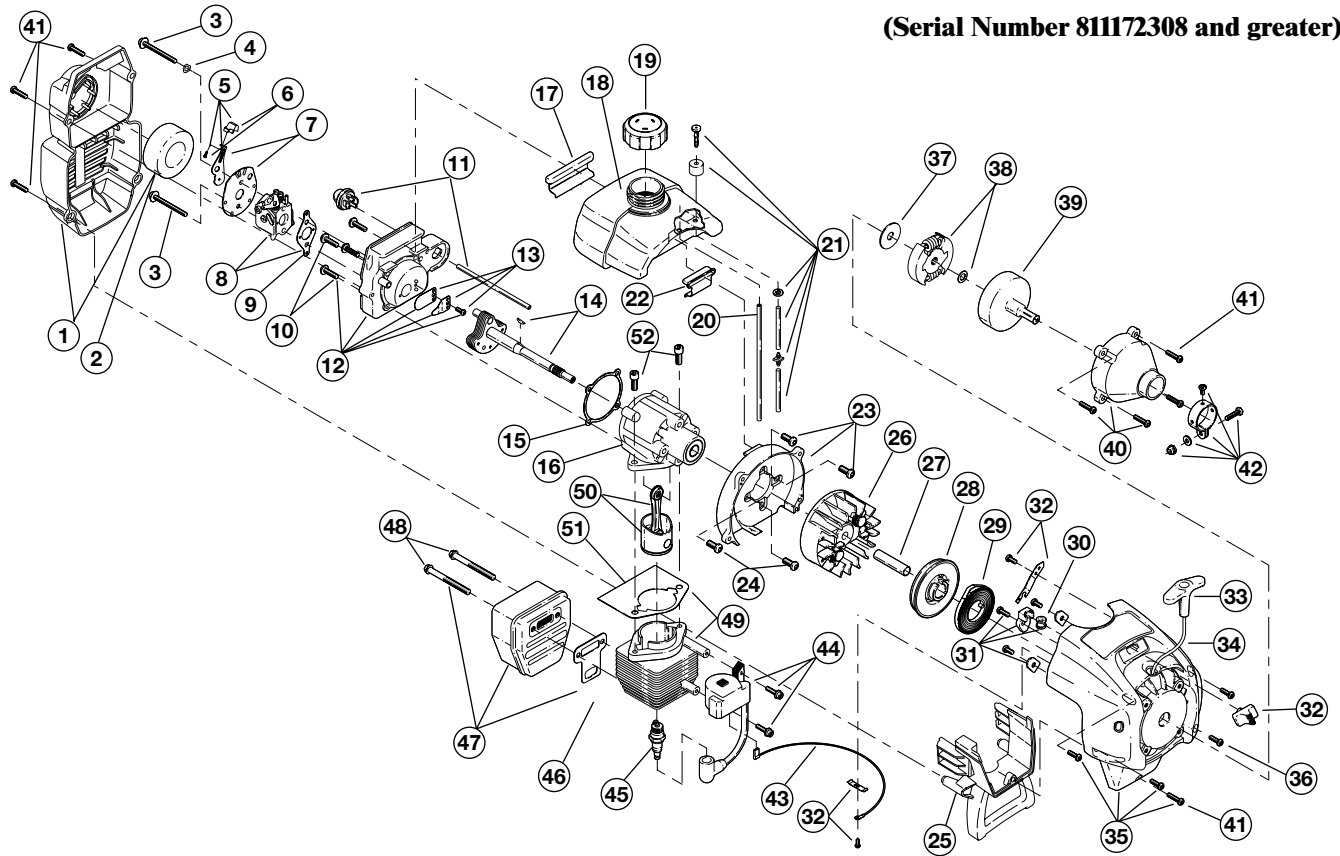


ENGINE PARTS - MODEL 767r
2-CYCLE GAS TRIMMER
 (Serial Number 811172308 and greater)

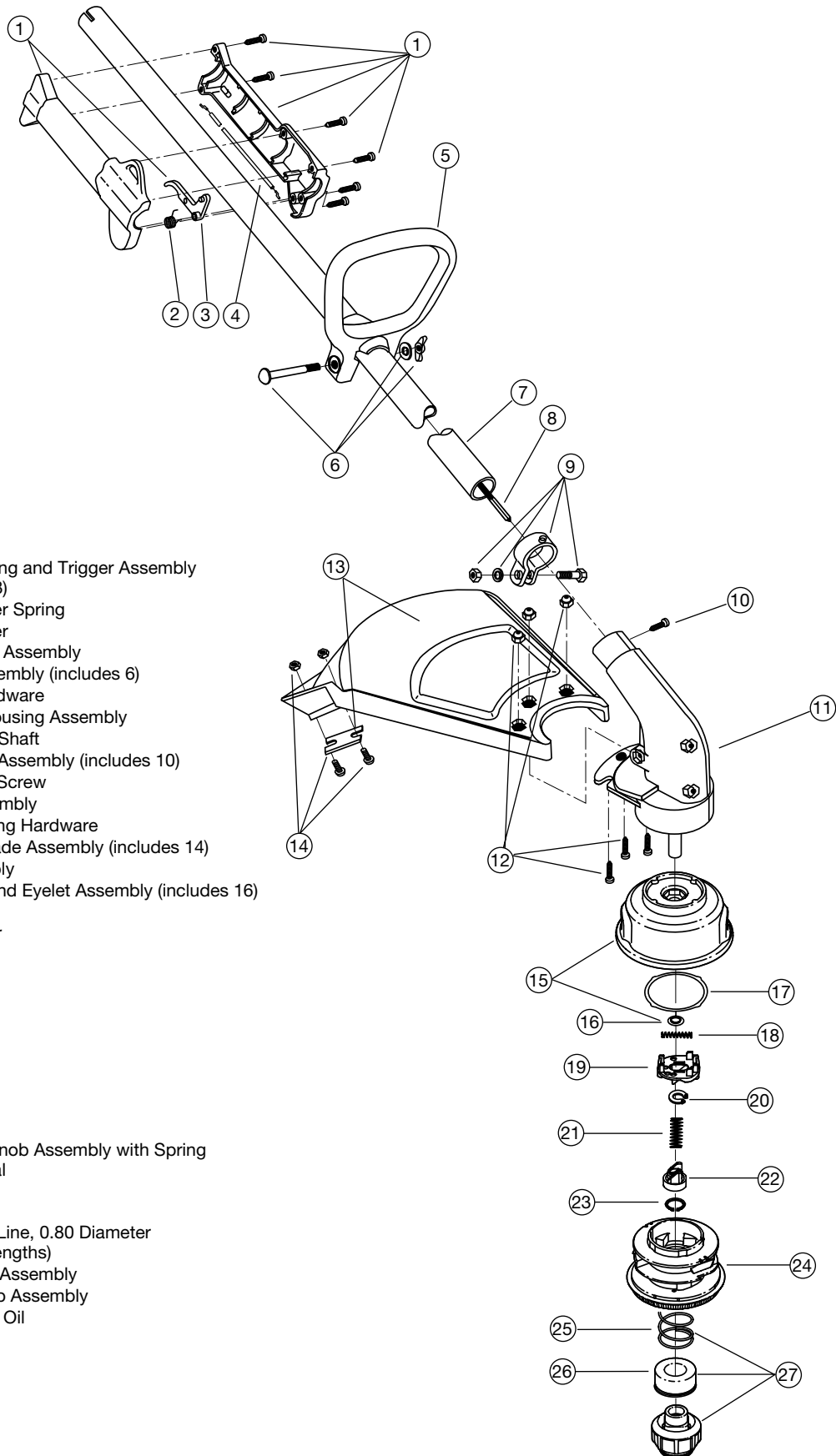


Item	Part No.	Description	Item	Part No.	Description
1	182059	Air Cleaner/Muffler Cover Assembly (includes 2 & 41)	34	613103	Rope
2	180350	Air Cleaner Filter	35	181443	Starter Housing Assembly (includes 28-34 & 43)
3	180351	Carburetor Mounting Screw Assembly	36	181862	Housing Screw
4	180352	Wavey Washer	37	181074	Clutch Washer
5	182061	Choke Lever Assembly (includes 6)	38	181445	Clutch Rotor Assembly
6	182070	Choke Knob and Screw	39	153592	Clutch Drum Assembly
7	182060	Choke Lever and Plate (includes 5)	40	180098	Clutch Cover Assembly
8	182062	Carburetor Assembly W/Limiter Caps (includes 9 & 21)	41	181345	Cover Screw
9	610675	Carburetor Gasket	42	153597	Upper Clamp Assembly
10	181860	Carb Mount Screw	43	180036	Wire Lead
11	181558	Primer and Hose Assembly	44	181937	Module Assembly
12	182063	Carb Mount Assembly (includes 10)	45	610311	Spark Plug
13	684451	Reed Assembly	46	182065	Exhaust Gasket
14	181498	Power Shaft Assembly	47	182066	Muffler Assembly (includes 48)
15	612115	Carburetor Mount Gasket	48	147575	Muffler Mounting Bolt Assembly
16	180026	Crank Case Service Assembly (includes 10, 14 & 24)	49	181622	Cylinder Assembly (includes 52)
17	612134	Rear Mounting Pad	50	684449	Piston and Rod Assembly
18	181438	Fuel Tank Assembly (includes 19-21)	51	610674	Cylinder Gasket
19	181559	Fuel Cap Assembly	52	181870	Cylinder Bolt
20	181168	Fuel Return Line	*	180011	Engine Gasket Kit
21	682039	Fuel Line Assembly	*	180602	O.E.M. Carburetor Repair Kit (Walbro)
22	145308	Front Mounting Pad	*	180090	O.E.M. Carburetor Repair Kit (Zama)
23	153520	Shroud Assembly	*	181873	Gasket Diaphragm Repair Kit (Walbro)
24	181861	Shroud Screw	*	180091	Gasket Diaphragm Repair Kit (Zama)
25	182064	Shroud Extension and Stand	*	180530	Piston Ring
26	180929	Flywheel Assembly	*	181623	Short Block Assembly (includes 10, 14, 16, 24, 45, 49-52)
27	181065	Spacer	*	610676	Flywheel Key
28	181597	Recoil Pulley Assembly	*	181501	Starter Housing Screw Set
29	613102	Recoil Spring	*	610309	Crankcase Seal
30	611061	Rope Guide	*	181599	Clutch Springs (Qty. 2)
31	181441	Pulley Retainer Assembly	*		Items Not Shown
32	181442	Switch Assembly (includes 43)			
33	181079	Pull Handle			

BOOM AND TRIMMER PARTS - MODEL 767r

2-CYCLE GAS TRIMMER

(Serial Number 811172308 and greater)



Item	Part No.	Description
1	182069	Throttle Housing and Trigger Assembly (includes 2 & 3)
2	610314	Throttle Trigger Spring
3	181556	Throttle Trigger
4	182068	Throttle Cable Assembly
5	145819	D-Handle Assembly (includes 6)
6	181587	D-Handle Hardware
7	181569	Drive Shaft Housing Assembly
8	181550	Flexible Drive Shaft
9	153597	Lower Clamp Assembly (includes 10)
10	145569	Anti-Rotation Screw
11	181566	Gearbox Assembly
12	180547	Shield Mounting Hardware
13	180548	Shield and Blade Assembly (includes 14)
14	180553	Blade Assembly
15	181457	Outer Spool and Eyelet Assembly (includes 16)
16	181458	Retainer
17	181561	Thrust Washer
18	181459	Small Spring
19	181461	Slider
20	181532	E-Clip
21	181531	Spring
22	181462	Plunger
23	181463	C-Clip
24	181464	Inner Reel
25	181465	Large Spring
26	181467	Foam Seal
27	181468	Bump Head Knob Assembly with Spring and Foam Seal

Optional Accessories

- * 181472 Replacement Line, 0.80 Diameter (Eight - 10 ft lengths)
- * 181460 Reel and Line Assembly
- * 682075 Shoulder Strap Assembly
- * 147543 Ryobi 2-Cycle Oil
- * Items Not Shown